

**STRATFORD ON AVON DISTRICT COUNCIL**

**TOWN AND COUNTRY PLANNING ACT 1990 SECTION 257**

**SM193 LIGHTHORNE HEATH (PART OF) PUBLIC BRIDLEWAY DIVERSION ORDER 2021**

This Order is made by Stratford on Avon District Council ("the Council") under Section 257 of the Town and Country Planning Act 1990 (as amended) because it is satisfied that it is necessary to divert public bridleway SM193 (part of) to which this Order relates in order to enable development to be carried out in accordance with planning permission 15/00976/OUT granted under Part III of the Town and Country Planning Act 1990 (as amended) namely: construction of a residential development (up to 2000 houses, including extra care housing), village centre (including primary school, community hub, health centre, retail and other services (Use Classes A1, A2, A3, A4, A5, B1, D1 and D2)), managed ecological reserve, public open space, recreation areas (including sports pavilion), play areas, acoustic bunding and associated infrastructure including roads, primary substation, sewers and attenuation ponds and demolition of identified buildings and structures.

**BY THIS ORDER:**

1. Public Bridleway SM193 shown by a continuous black line over the land shown on the Order Plan and described in **Part 1 of THE SCHEDULE** to this Order shall be diverted as provided below.
2. There shall be created to the reasonable satisfaction of the Council an alternative highway for use as a replacement for Public Bridleway SM193 (part of) as provided in **Part 2 of THE SCHEDULE** shown by a wide Dashed line on the Order Plan.
3. The diversion of the Public Bridleway SM193 (part of) shall have effect on the date on which it is certified by the Council that the terms of Article 4 below have been complied with.
4. The surface from points A to B to C to D to E to F to G will be self-binding gravel apart from an approximately 20 metre section of tarmac to the immediate east of point B. The new bridleway shall be no less than 2 metres wide at all points.
5. The applicants, Taylor Wimpey UK Limited and BDW Trading Limited, are hereby required to implement and pay the full cost of carrying out the said works as described in Article 4 above.
6. Where immediately before the date the bridleway is diverted there is apparatus under, in, on, over, along or across it belonging to statutory undertakers for the purpose of carrying on their undertaking, the undertakers shall continue to have the same rights in respect of the apparatus as they then had.

**THE SCHEDULE**

**PART 1**

**Description of existing path or way**

That section of Bridleway SM193 running from Point A (grid reference 435738 255688), as indicated on the Order Plan, running in a generally north easterly direction for approximately 375 metres to Point H (grid reference 435934 256084), then running in a generally north easterly direction for approximately 90 metres to Point I (grid reference 435965 256167), then running in a generally north westerly direction for approximately 120 metres to Point G (grid reference 435876 256279).

**PART 2**

**Description of alternative highway**

From Point A (grid reference 435738 255688), as indicated on the Order Plan, running in a generally north easterly direction for a distance of approximately 70 metres to Point B (grid reference 435749 255748), then running in a generally northerly direction for approximately 230 metres to Point C (grid reference 435863 255999), then running in a generally north easterly direction for approximately 50 metres to Point D (grid reference 435887 256042), then running in a generally north westerly direction for approximately 105 metres to point E (grid reference 435824 256077). Then running in a generally northerly and easterly direction for approximately 60 metres to point F (grid reference 435849 256145), then running in a generally northerly direction for approximately 50 metres to point G (grid reference 435876 256279).

THE COMMON SEAL OF )  
STRATFORD ON AVON DISTRICT )  
COUNCIL was hereunto affixed )  
this 24 day of MAY 2021 )  
in the presence of: )

*ROSS CHAMBERS*  
*SOLICITOR*

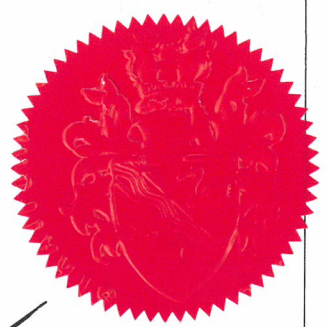
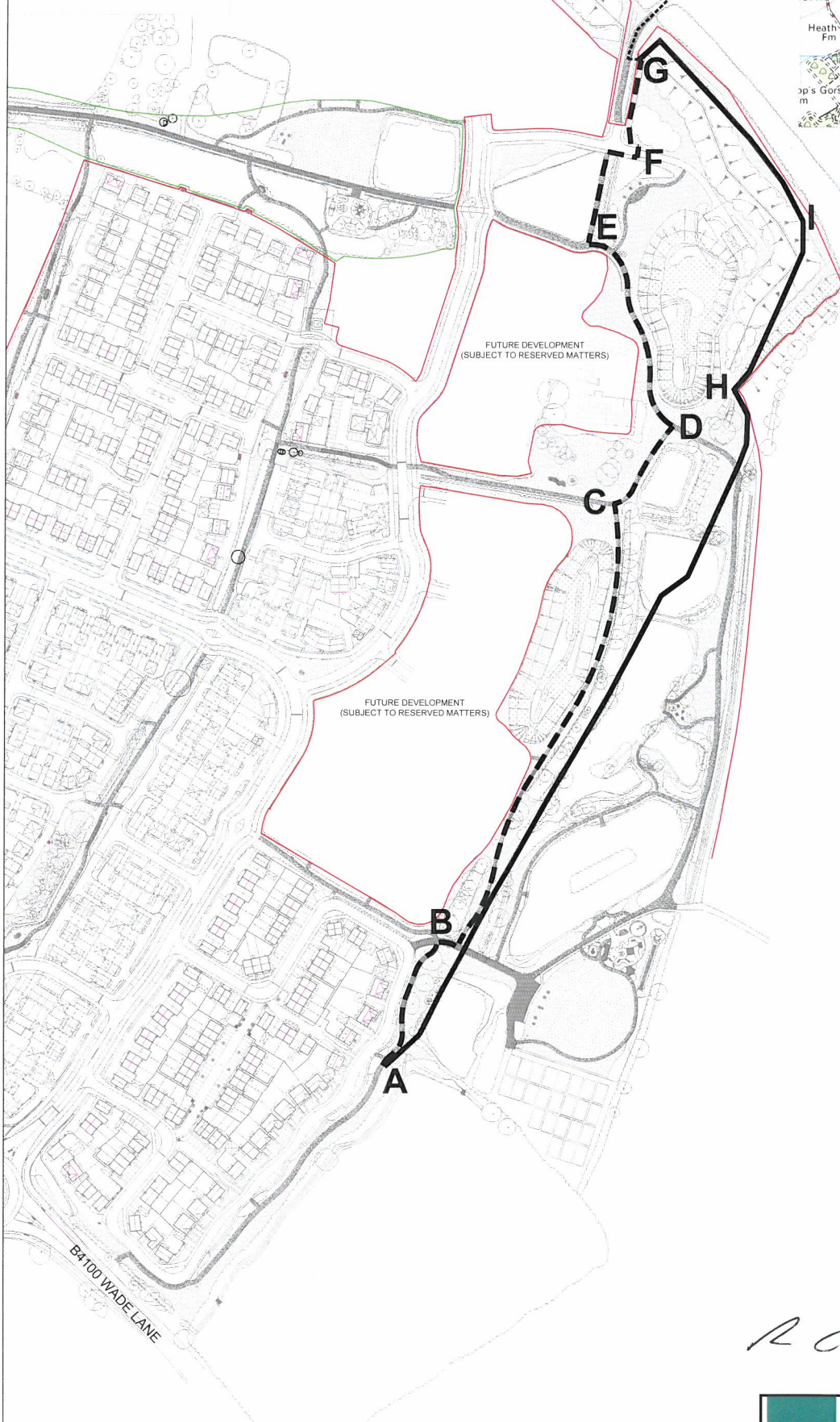
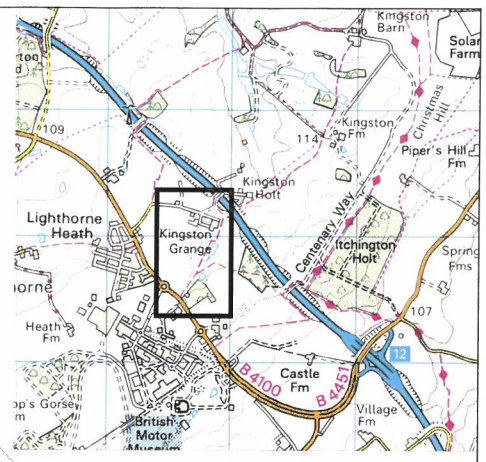
AUTHORISED OFFICER



*R Chambers* 21928

- KEY:
- Phase 2a Boundary
  - Phase 2c Boundary
  - EXISTING PROW UNAFFECTED (RETAINED)
  - SM193
  - PROW TO BE DIVERTED
  - SM 193 ALTERNATIVE PROW

FUTURE DEVELOPMENT  
(SUBJECT TO RESERVED MATTERS)



*R Chamberlain*

21929

SCALE 1:1250@A1  
0 50m 100m 200m

**Stratford On Avon District Council**  
 Town & Country Planning Act 1990 S.257  
 Public Bridleway No SM193 (part)  
 Parish of Upper Lighthorne  
 Public Bridleway Diversion Order 2021